



# MARK Elephant (Hub) Instructions for use

Descender, rescue and lifting device  
EN 341:2011 class 1A • EN 1496:2017 class B



Serial number:

Translation / German into English  
Keep for future use  
Version 1.6

**MARK Save A Life GmbH**

Gleinkerau 23  
4582 Spital am Pyhrn  
Österreich / Europa  
Tel +43 7563 8002 - 111  
Fax +43 7563 8041 - 111  
mark@savealife.at  
www.savealife.at  
[www.facebook.com/makingyourlifesaferr](https://www.facebook.com/makingyourlifesaferr)



**Dear customer,**

Congratulations on purchasing this product. It was manufactured and tested subject to strict quality standards and with the utmost care. We thus laid the groundwork for safe use. It is now your responsibility to use this product correctly.



For correct and safe use of this product it is essential that you read these instructions carefully. Follow all safety instructions in the respective chapters of this manual.

You may only use this product if you have read and understood these instructions for use, if you have undergone training and if you are physically and mentally capable of doing so.

This manual including the inspection protocol must be kept with the product. In case of loss or if manual and inspection protocol became unusable, the effective versions of both documents are available for download at [www.savealife.at](http://www.savealife.at)

You can download the instructions for use and the test protocol via [www.savealife.at](http://www.savealife.at).

Do you have any questions or wishes concerning this product or do you want to give us feedback? Just call us or send an email.

**Customer service**

MARK Save A Life GmbH  
Gleinkerau 23  
4582 Spital am Pyhrn  
Austria / Europe  
Tel +43 7563 8002 – 111  
Fax +43 7563 8041 – 111  
[mark@savealife.at](mailto:mark@savealife.at)  
[www.savealife.at](http://www.savealife.at)

**Manufacturer**

MARK Save A Life GmbH, Gleinkerau 23, 4582 Spital am Pyhrn, Austria / Europe

**Country of origin**

Austria / Europe

**Copyright**

MARK Save A Life GmbH, Gleinkerau 23, 4582 Spital am Pyhrn, Austria / Europe

## TERMINOLOGY

COMPETENT PERSON

trained by MARK Save A Life. The competent person is authorized to perform inspections of the product.

RESCUE / DESCENDER  
DEVICE

MARK Elephant (Hub) incl. rope

ANCHOR DEVICE

MARK Gekko, MARK Boa or another anchor devices corresponding to the applicable standards for PPE against falls from a height.



To facilitate reading, only the masculine form is used in this document; all references to the male gender shall be deemed and construed to include the female gender.

<b>1 FOR YOUR OWN SAFETY</b>	<b>5</b>
1.1 Symbols used	5
1.2 User requirements	6
1.3 Visual and functional inspection	6
1.4 Use	6
1.5 Storage and transport	7
1.6 Maintenance	7
1.7 Accidents and rescue plan	7
<b>2 PRODUCT OVERVIEW</b>	<b>8</b>
2.1 Technical details	8
2.2 Marking	8
2.3 Scope of delivery	9
2.4 Accessories	9
2.5 Maximum descent distance recommended by the manufacturer	9
2.6 Redundancy	10
2.7 Rescue deployment	10
2.8 Overload	10
2.9 Temperature	10
<b>3 USE</b>	<b>11</b>
3.1 Intended use	11
3.1.1 Descending two or more persons from a higher to a lower position (shuttle system)	12
3.1.2 Rescuing of an injured person hanging in the harness by: Lifting, ....	13
3.1.3 Rescue lift (with rescue pole)	15
3.2 Important notes on the usage of the eyebolts	16
3.3 Anchor device	17
3.4 Training	17
3.5 Seal-Pack	18
3.6 Lifetime and period of use	19
<b>4 TRANSPORT AND STORAGE</b>	<b>20</b>
<b>5 MAINTENANCE</b>	<b>20</b>
5.1 Repairs	20
5.2 Cleaning	20
5.3 Disinfection	20
<b>6 INSPECTION</b>	<b>21</b>
6.1 Functional inspection	21
6.2 Regular inspections	21
6.3 Inspection and maintenance	22
<b>7 RETIREMENT</b>	<b>23</b>
<b>8 RESALE</b>	<b>23</b>

<b>9 ACCIDENTS</b>	<b>24</b>
9.1 Suspension trauma	24
<b>10 LEGAL INFORMATION</b>	<b>25</b>
10.1 Declaration of conformity	25
10.2 Product liability	25
10.3 Copyright	25
10.4 Trademarks	25
<b>11 DECLARATION OF CONFORMITY</b>	<b>26</b>
<b>12 TEST PROTOCOL</b>	<b>27</b>
<b>13 USAGE OVERVIEW</b>	<b>28</b>

## 1 FOR YOUR OWN SAFETY

Activities requiring the use of this product can be dangerous. Moreover, it is also possible to use this product incorrectly in many ways and we cannot possibly list or think of all of them.

These instructions for use will give you information on your safety and the product and its use. This information and the safety instructions do not however replace personal experience, knowledge of the product and self-responsibility.

You will find detailed safety regulations and descriptions in the following chapter and at the beginning of each chapter. Read them carefully and make sure you understand them. If you need more information or if you are not sure how to use this product, get in touch with MARK Save A Life. We will be happy to help you.

This product is state of the art and corresponds to all applicable technical standards and guidelines.

### 1.1 Symbols used

In this document safety regulations of the following categories are being used:

**DANGER, WARNING, CAUTION** and **TIP**. Follow the safety instructions to avoid personal injuries or damage of the product.



**DANGER**

**DANGER** means that death or a serious injury are very likely to happen if an accident occurs or a hazardous situation is not avoided.

- In order to avoid serious injury or death all safety instructions marked with **DANGER** must be followed.



**WARNING**

**WARNING** means that death or a serious injury are likely to happen if an accident occurs or a hazardous situation is not avoided.

- In order to avoid serious injury or death all safety instructions marked with **WARNING** must be followed.



**CAUTION**

**CAUTION** means that moderate or minor injuries may happen if an accident occurs or a hazardous situation is not avoided.

- In order to avoid moderate or minor injuries all safety instructions marked with **CAUTION** must be followed.



**TIP**

**TIP** draws your attention to a possible damage of the product or other properties if an accident occurs or a hazardous situation is not avoided.

- In order to avoid damage of the product or other properties all safety instructions marked with **TIP** must be followed.

## 1.2 User requirements

- Read these instructions for use thoroughly before using this product. You may only use this product after you have read and understood these instructions for use.
- This product may only be used as a descender and rescue device for persons.
- This product may only be used by two persons at a time.
- You may only use this product if you are mentally and physically capable of doing so.

## 1.3 Visual and functional inspection

- The visual and functional inspection must be carried out by MARK Save A Life or a competent person. MARK Save A Life offers trainings for that purpose.
- This product must be inspected (e.g. damage of the rope etc.) before and after its use.
- If the product has been subjected to heavy loads (e.g. due to a fall) , it must be sent to MARK Save A Life for inspection. Don't forget to give us all necessary information (where and how this product has been damaged).
- If the use of this product does not seem safe anymore (e.g. rope damaged etc.), send it to MARK Save A Life or a competent person for inspection and repair. Do not use it!
- Fill in the inspection protocol carefully. Each inspection must be entered.

## 1.4 Use

- The lifetime of metal parts of this product is unlimited. Textile components (e.g. ropes and lanyards) must be replaced after, maximum, 10 years.
- This product will heat up during the descent. Touching the housing or holding the long rope end during descent may lead to burns.
- If sharp edges (radius < 3mm) cannot be avoided, always use a protecting shield to protect the rope from damage or breaking.
- Always fix this product to an anchor device according to EN 795 before descending.
- Do not guide the loaded rope end through the eye bolts. This would stop the descent.
- This product may only be used in combination with tested and certified products (according to applicable standards for PPE against falls from a height).
- You may only resell this product when accompanied by the instructions for use in the respective language of the country and the complete inspection protocol.
- The use protocol must be filled in after each use.



### **1.5 Storage and transport**

- Store this product in a dry and clean place protected from mechanical (e.g. sharp edges) and chemical hazards (e.g. acids, gas) at room temperature and protected from light (e.g. UV).
- Store and transport this product in the original or an equivalent packaging. Store the rope loosely in figure of eight loops to avoid knots, which may result in blocking the device.

### **1.6 Maintenance**

- Repairs may only be effected by MARK Save A Life or a competent person.
- If this product has been subject to a fall, all parts must be inspected and, if necessary, be replaced by MARK Save A Life.
- This product must not be tumble-dried, dried in the sun or over a heat source (e.g. fireplace).
- This product (the rope in particular) must not be disinfected or impregnated.
- Do not use chemicals when cleaning the product.
- This product must be inspected at least once a year but in any case after maximum 6000m (at 100 kg) distance. Enter the distance in the use protocol.

### **1.7 Accidents and rescue plan**

- A suspension trauma can be triggered by falling into the rope, a long descent or if a person is helplessly suspended in the harness for a long time.
- Prepare a rescue plan indicating all possible rescue measures in case of emergency before using this product.
- Check the use and fall area and make sure to secure, mitigate or remove possible dangers before using this product.

## 2 PRODUCT OVERVIEW



### 2.1 Technical details

- certified according to EN 341:2011 class 1A (MARK Elephant/Hub) and EN 1496:2017 class B (MARK Elephant Hub)
- weight (without rope): 2,8kg (MARK Elephant ), 3,4kg (MARK Elephant Hub)
- aluminium carabiner
- polyamide kernmantle rope (EN 1891, class A)
- descent / lifting load max. 225kg (2 persons)
- descent / lifting height max. 300 m (at max. 33 descents with 75 kg)
- descent speed approx. 0.8 m/sec
- descent controllable with eyebolts
- ambient temperature -40°C to +65°C
- can be used as a shuttle system

### 2.2 Marking

This product has a serial number engraved in the housing. You will also find the serial on the first page of these instructions for use.

Product name

Date of production/Serialnumber

EN standard

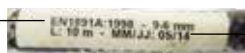
CE inspection code



EN standard

Diameter and

length of rope



Date of production

- Use an inventory number for this product. Enter the inventory number in the inspection protocol.
- Do not remove labels or other markings from this product.

### 2.3 Scope of delivery

- 1 pc MARK Elephant (Hub)
- 1 pc rope inserted in the housing (length acc. to order)
- 1 pc packaging
- 1 pc instructions for use incl. inspection and use protocol

### 2.4 Accessories

**This product may only be used in combination with tested and certified products.**

- Only use this product with tested products or with products that have been recommended by MARK Save A Life. The following products correspond to the applicable PPE against falls from a height standards.



#### Tested and certified products

Rescue overall/harness	EN 1497
Energy absorber	EN 355
Carabiner	EN 362
Anchor device	EN 795
Full body harness	EN 361
Lanyards	EN 354

The above products are featured on [www.savealife.at](http://www.savealife.at). If you need more information please send us an email or call us.

### 2.5 Maximum descent distance recommended by the manufacturer

- max. descent distance with 1 person up to a max. of 75 kg: 8000m
  - max. descent distance with 1 person up to a max. of 100 kg: 6000 m
  - max. descent distance with 1 or 2 persons up to a max. of 150 kg: 4000 m
  - max. descent distance with 1 or 2 persons up to a max. of 225 kg: 600 m
  - max. descent distance with 2 persons up to a max. of 225 kg and redirection: 1200 m
- (Make sure to meet the higher safety standards as given in these instructions for use, since the device is operated at its limits.)

You can reduce the load on the device through redirection (see 3.2). If you work with a redirected rope, you can assume the recommendation of the respective lower value.

## 2.6 Redundancy

A training is not an emergency! Always use a redundant rope system. Unforeseen events, technical or human failure cannot be ruled out. For redundancy safety measures you can also use a second MARK Elephant (Hub).

## 2.7 Rescue deployment

After each rescue deployment the device has to be inspected by the manufacturer in order to ensure safe use. We recommend using different devices for training and rescue deployments.

## 2.8 Overload

Devices that have been subjected to a fall or a heavy load must be retired.



**TIP**

Rope clamp: When you activate the rope clamp, the hand wheel can only be turned in one direction. Turn the hand wheel gently to figure out the direction in which you can turn the wheel.

Danger: If you turn the hand wheel in the wrong (blocked) direction, the wheel or the device can be damaged. In that case, the device has to be inspected by MARK Save A Life or by a competent person.

## 2.9 Temperature

This product can be used in environments between  $-40^{\circ}\text{C}$  and  $+65^{\circ}\text{C}$ .

### 3 USE

Activities requiring the use of this product can be dangerous. Please observe all danger and safety notes. In case of doubt or if you have any questions, please feel free to contact us.

#### 3.1 Intended use

**This product may only be used as a rescue, descender and lifting device and only for transporting persons.**

- This product may only be used for its intended purposes as defined in these instructions for use and only in combination with tested (certified) components according to the applicable PPE standards. Other combinations with uncertified components are not permitted and can be dangerous.

#### Use

**Using this product without having read these instructions for use can lead to accidents resulting in severe injuries or death.**

- Read these instructions for use carefully before using this product.
- In case of doubt or if you have questions please contact MARK Save A Life.

#### Inspection

**Using this product without having performed a visual and functional inspection can lead to accidents resulting in severe injuries or death.**

- Always inspect this product before and after its use.
- If you are not sure if this product can be used safely, do not use it.

#### Edge protection

**If the rope is guided over a sharp edge, it can be damaged.**

- Always use an edge protection (e.g. a protective plate) or a protective shield with sharp edges..

#### Risk of burns

**This product (housing and rope) will heat up during the descent. Risk of burns during longer descents.**

- Do not touch the housing during or after long descents.
- Do not hold on to the long rope end during descent.
- Wear protective gloves.

This product offers you a range of applications for various situations. Using this product requires solid training by professionals who have been trained on this product.



**DANGER**



**CAUTION**

### 3.1.1 Descending two or more persons from a higher to a lower position (shuttle system)

With MARK Elephant, two or more persons can be lowered with the shuttle system.

**Example:** Rudolf und Andreas are working on an aerial work platform as they notice that it is blocked and they are stuck. They will both descend using MARK Elephant as a shuttle system. Shuttle systems means: As many persons as necessary can descend with one descender device.



1

First Rudolf hooks the carabiner of MARK Elephant in the lanyard which he has mounted on the basket of the AWP.



2

Then he fixes the carabiner of the shorter rope end to Andreas' harness. The longer, unloaded rope end remains in the packaging. Andreas descends. He reaches the ground and unhooks himself from the carabiner.



3

Now Rudolf pulls any remaining rope through the descender until the carabiner of the long rope end is near the descender. Rudolf can now hook himself onto this carabiner and begin his descent.

Attention: Avoid slack rope!

During the descent, Andreas' carabiner goes up (and could be used by a third person). Down at the ground, Rudolf unhooks himself. That's how the shuttle system works.

### 3.1.2 Rescuing of an injured person hanging in the harness by: Lifting, Unhooking from the retracting device and then descending using MARK Elephant Hub

**Example:** Rudolf and Herbert are working in a multistorey warehouse on a scaffolding. They are secured by fall protection equipment. Suddenly, Herbert slips and falls into the rope.



1

Rudolf immediately fixes the carabiner of the shorter rope end of MARK Elephant Hub to an anchor point on the scaffolding (here: using a lanyard). Then he fixes the carabiner of the descender device MARK Elephant Hub onto his harness.



2

He guides the long rope end through the eyebolt and the rope clamp. Then he unhooks his belay system (see above in blue). He is now suspended in a stable position.



3

Now he unhooks the long rope end from the rope clamp and puts it around the upper left eyebolt. He holds the handwheel and thus stays in position. Then he lowers himself to Herbert.



4

Reaching Herbert, Rudolf guides the long rope end out of the eyebolt and through the rope clamp again. He is now again suspended in a stable position. He hooks Herbert to the MARK Elephant Hub using a lanyard. Now both are suspended on the rescue device.



5

Using the hand wheel Rudolf now lifts himself and Herbert.

Attention: Check the correct direction of the hand wheel!

Danger: The loose end of the rope will form a loop (loose rope)!

After every second turn of the hand wheel, Rudolf pulls the longer rope end which runs through the rope clamp. Rudolf can now lift himself and Herbert to a higher position or: see next point!



6

Rudolf wants to descend to the ground. He loosens the longer rope end from the rope clamp and runs it over the upper left eyebolt. He descends together with Herbert.



### 3.1.3 Rescue lift (with rescue pole)

Using MARK Elephant people can be rescued from a lower to a higher position with a rescue pole.

**Example:** While working on a high bay racking, Herbert slips and falls into his belay system.



1

His colleague Rudolf immediately fixes the carabiner of MARK Elephant Hub at an anchor point on the scaffolding (here: with a lanyard). Then he pulls the short rope end until the carabiner on the rope end reaches Herbert.



2

He attaches the carabiner of the shorter rope end to the rescue pole. Then he hooks the carabiner in the eyelet of Herbert's overall (using the rescue pole). Then he tightens the rope end.



3

He attaches a battery screwdriver to the MARK Elephant Hub and carefully lifts Herbert up. He could also manually lift him up using the hand wheel (and muscle power) in which case he would guide the rope through the rope clamp to ensure a safe rescue. In this case, he can clamp the rope in the rope clamp and pull the rope after a couple of turns. He can thus secure the height.



Always use the slowest gear of the battery screwdriver (max. 350 rpm); suggested minimum torque 20 Nm.

### 3.2 Important notes on the usage of the eye bolts



Eye bolt

Shorter rope end, has to be tightened (no loose rope)

Longer rope end, runs through the eye bolt

Using the eye bolts, you can control the descent speed or stop the descent. The longer, unloaded rope end runs through the eye bolts. If you hold on to the longer rope end, you can throttle the descent speed or stop the descent. If you don't use the eye bolts, the descent speed will be regulated automatically by two fly wheel brakes (speed ca. 0.8m/sec)

If you are using the descender as a shuttle system, make sure that you use the eye bolts correctly.

**Standard rule: Only run the unloaded, longer rope end through the eye bolts!**



**CAUTION**

#### **Longer and shorter rope end**

**If you run the shorter rope end through the eye bolt (shorter rope end = loaded rope end, on which a person is suspended) the descent will be blocked and the person cannot be lowered to the ground.**

- Only run the longer, unloaded rope end through the eye bolts!



**RIGHT**



**WARNING**

### 3.3 Anchor device

#### **Attachment on anchor device**

**Improper attachment on an anchor device may lead to falls resulting in severe injuries or death.**

- Inspect the anchor at least once a year.
- Only use anchors that correspond the requirements of PPE.

Anchor devices are necessary in places that present falling hazards (acc. to §72 AAV und § 30(2) Bau). The building planner/owner is responsible for the positioning and installation of anchor devices according to the applicable legal requirements, norm and rules.

Buildings and plant structures have to present appropriate load capacities. According to the applicable standards the following (static) loads are installed in the building.

- Restraint systems 4 kN
- Fall protection systems 10 kN

On [www.savealife.at](http://www.savealife.at) you will find the following documents available for download:

- instructions for use for MARK Gekko and MARK Boa
- checklist for installation and regular inspection
- checklist inspection protocols
- installation protocol and sub-structure checklist

### 3.4 Training

The customer and user must take care that he has understood the functionality of this product and all safety notes and knows how to safely use this product. He must complete a training on correct use, installation, inspection, maintenance and use limitations before using this product. He should repeat the training regularly without endangering trainees or users.



**TIP**

**Training inspection requirements for this product must be followed (see inspection and maintenance).**

Trainings are an important part of MARK Save A Life products and services. No protective equipment will save you from injury or death if you do not know how to use it properly.

In order to ensure your safety, we offer trainings where you can learn how to safely operate this product.

For further information please contact us at +43 7563 8002 111.

### 3.5 Seal-Pack

If used as an emergency equipment, this product (= sealed in special packaging) has a lifetime of 10 years. After a max. of 10 years textile parts must be replaced and metal parts must be inspected by MARK Save A Life. The packaging has to be inspected at least once a year but in any case before each use (damage, humidity etc.). If this product is damaged, it must be sent to MARK Save A Life for inspection.



**Im Notfall hier aufreißen!**

**In case of emergency  
open here!**



**Dieses Produkt darin ist  
nur ungeöffnet  
für 10 Jahre wartungsfrei!**

**This product is maintenance  
free for 10 years  
when seal-packed!**

### 3.6 Lifetime and period of use

However, conditions of use and other factors may influence its useful life. You may therefore even have to repair or retire this product earlier (see below).

The shorter the descent height, the more often the rope will run through the descender device until the device has to be inspected. Short descent heights will therefore wear off the rope. Wear-off is also induced by other factors such as maintenance, sharp edges, chemical and mechanical influences etc. After max. 100 descents the rope has to be changed. Abrasion and usage have to be regularly checked. If the rope does not seem safe anymore, send the device to MARK Save A Life or a competent person to check and replace the rope.

#### Information on work according to EN 341

- max. descent distance in single use (max. 75kg): 10 000m
- max. descent distance in single use (max. 100kg) : 7 500m
- max. descent distance in single use (max. 150kg): 5 000m
- max. descent distance in double use (max. 225kg): 3 000m
- max. descent distance in triple use (max. 285kg): 2 000m

$$\text{work } W = m \times g \times h \times n$$

W = work in Joule (J)

m = load capacity (weight of the person) (kg)

g = gravity 9.81 m/s<sup>2</sup>

h = descent height in meter (m)

n = number of descents

#### Possible influencing factors

- extreme use conditions
- mechanical and chemical damage
- environmental factors
- inappropriate storage and transport

#### Recommended max. lifting distance

During lifting, descender device and rope are under more stress than during descending. Frequent use of the lifting function may lead to slip. Normally, this is not dangerous and you can descend safely to the ground. The maximum lifting distance should however not be more than 4 times the rope length. Make sure to check rope abrasion accordingly.

## 4 TRANSPORT AND STORAGE

Observe these safety notes to ensure safe storage and transport of this product.



**TIP**

- Always make sure that there is no liquid in the metal housing (otherwise dry the device and the rope before using it).
- Always store this product in a dry, proper place and keep it away from mechanical (e.g. sharp edges) or chemical (e.g. acids, gases) hazards, store it at room temperature and protected from light (UV radiation).
- When drying this product, always put it with the brake drums upwards to avoid humidity in the housing.
- Store and transport this product in its original (or an equivalent) packaging.
- Check the packaging regularly (holes etc.); especially, if the product is used as an emergency equipment (= sealed in special packaging).

## 5 MAINTENANCE

### 5.1 Repairs

#### **Product changes**

**Repairs, adjustments or changes to this product that have not been authorized by MARK Save A Life can lead to severe accidents and falls.**

- Changes (e.g. longer rope) and repairs have to be performed by MARK Save A Life.

If you are not sure if this product can be used any more, do not use it but send it to MARK Save A Life or an authorized partner for inspection.

### 5.2 Cleaning

- Clean the metal parts with a wet towel.
- Never tumble-dry, never let it dry in the sun or over a heat source.
- Air-dry this product in an airy, shaded place.
- Rinse the rope with warm water and wipe it with a dry towel afterwards.
- Never disinfect the rope.
- Never use chemical detergents.

### 5.3 Disinfection

Disinfection of this product is prohibited. In case of contamination, retire this product environmentally-friendly.



**DANGER**

## 6 INSPECTION



**DANGER**

### Inspection

**Using this product without checking it for possible damage can lead to severe accidents or death.**

- Always perform a visual and functional inspection of this product before and after each use.
- If you are not sure if this product can be used safely any more, do not use it.

Inspection by MARK Save A Life or an authorized partner is only valid under the proviso that

- this product has not been subjected to a fall,
- components of this product have not been modified,
- textile parts have not been contaminated with chemicals,
- this product has not been exposed to temperatures under  $-40^{\circ}\text{C}$  or over  $+65^{\circ}\text{C}$ ,
- metal parts have not fallen to the ground from more than 2m.

### 6.1 Functional inspection

- Check if metal parts (carabiner, housing) are damaged.
- Check if nuts and bolts are fixed.
- Check if the rope has cracks or other visual or palpable damage.
- Check if the rope runs smoothly. Pull both rope ends slowly one after the other. If you feel slight resistance, the product works.
- Check the fly wheel brakes. Pull both rope ends quickly one after the other. If you hear a „click“ and the rope resists slightly when you pull it, the brakes are OK.



**TIP**

### 6.2 Regular inspections

After having been subjected to a fall, this product has to be sent to MARK Save A Life for inspection. Don't forget to give us all necessary information (where and how this product has been damaged). The results must be noted in the inspection protocol. Always keep the inspection protocol and the instructions for use with the product.

The frequency of inspections depend on use intensity and may vary according to the conditions and environment in which this product is used. If this product is subject to increased use, you may have to inspect it more than once a year.

This product has to be inspected **at least once a year**, but in any case after 6.000m (at 100kg) by MARK Save A Life or a competent person (exception: if used as an emergency equipment).

If this product is used as emergency equipment (kept in original packaging and not being used), it has to be inspected by MARK Save A Life after a max. of 10 years. Textile components have to be replaced. If this product is used as an emergency equipment, the packaging has to be checked regularly and, if damaged, the packaging and the product have to be sent to MARK Save A Life.

### 6.3 Inspection and maintenance

MARK Elephant Hub descender, rescue and lifting device has been designed for harsh work environments. In order to ensure lifetime and period of use, all components have to be checked accordingly.



**TIP**

**Always perform a visual inspection before using this product. This product has to be inspected by a competent person once a year. Comply with intervals and inspections regulations as indicated in the table below.**

MARK Elephant Hub descender, rescue and lifting device Inspection criteria	Inspection required by user	Inspection required by competent person	Inspection required by manufacturer
For a properly stored, not used device ... MARK Seal-Pack	Before each use	Control packaging at least once a year	Every 10 years
For training devices and devices used for standard activities (no emergency operations) ...	Before each use	At least once a year and after every 6.000m with 100 kg (see 2.5)	After every 7,500m with 100kg (see 2.4)
For devices used in emergency operations ...	Immediately remove from service and send to manufacturer	Immediately remove from service and send to manufacturer	Immediately remove from service and send to manufacturer

If you use this product in very harsh environments (extreme weather and use conditions, heavy descents and liftings) you have to check this product more often.



## **7 RETIREMENT**

- You have to retire this product if MARK Save A Life or a competent person has stated that use is not safe.
- Retire the product in such a way that it cannot be used anymore.
- Retire this product in an environmentally friendly way. Separate materials!

## **8 RESALE**

- To ensure safe and correct use, this product may only be resold with the instructions for use and the inspection protocol.
- The instructions for use and the inspection protocol must be available in the official language of the buyer. This is within the seller's responsibility.

## 9 ACCIDENTS

The following information should help you avoid accidents. However, this information does not replace experience, responsibility and know-how and does not release you from assuming personal risk.

- Prepare a rescue plan and indicate all possible rescue measures for any given emergency situations.
- Check use and fall area before using this product and alleviate or secure them.

### 9.1 Suspension trauma

#### **Suspension trauma**

**Falling into the rope, a long descent or being suspended for a long period can induce suspension trauma (orthostatic shock). A suspension trauma can have lifelong detrimental effects on your health and even lead to death.**

- Rescue the injured person quickly.
- Perform the correct first aid measures.

How do I know it's a suspension trauma?

- Paleness
- Sweating
- Shortness of breath
- At the onset: increased pulse rate
- Narrowing of vision
- Dizziness
- Nausea
- Later drop in pulse rate and blood pressure



### **A suspension trauma is a medical emergency!**

- **Call the ambulance!**
- Free the injured person from the suspended position.
- Position the injured person with raised upper body (sitting up or squatting).
- Open straps and tight clothes.
- Monitor cardiovascular and respiratory system.

If the injured person is suspended but able to move, tell him: Kick one foot with the other. Point the toes. However, this exercise will keep the blood circulation going for a short time (some minutes).

(Source: BG/GUV-I 869)



**DANGER**

## 10 LEGAL INFORMATION

- Do not remove labels or other markings from this product.
- Use an inventory number for this product. Enter the inventory number in the inspection protocol.
- This product has a serial number. The serial number is entered on the instruction use and on the product.

### 10.1 Declaration of conformity

The manufacturer, MARK Save A Life GmbH, Gleinkerau 23, 4582 Spital am Pyhrn, Austria / Europe, hereby declares that this product („MARK Elephant (Hub)“)

- conforms with the safety regulations for PPE against falls from a height (EC Directive 89/686/EEC as amended) and abides by the following standard  
**EN 341:2011 class 1A(MARK Elephant/Hub)**  
**EN 1496:2017 class B (MARK Elephant Hub)**
- is identical with the PPE against falls from a height inspected by the accredited testing, inspection and certification body Allgemeine Unfallversicherungsanstalt, Adalbert-Stifter-Straße 65, 1200 Wien, with the number  
**Identification number 0511**
- is subject to the quality management system under the control of the accredited testing, inspection and certification body TÜV Süd Landesgesellschaft Österreich GmbH with the number  
**Identification number 0917**

### 10.2 Product liability

MARK Save A Life does not assume liability for any direct, indirect consequences or consequences associated with accidents that result from improper use of this product or from false information made by a competent person or fitter on the test protocol or acceptance protocol.

### 10.3 Copyright

The layout, visuals, pictograms, photos and any other information in these instructions for use are protected by copyright.

### 10.4 Trademarks

All trademarks are the property of their respective owners.

## 11 DECLARATION OF CONFORMITY

### EU-KONFORMITÄTSERKLÄRUNG EU-DECLARATION OF CONFORMITY



MARK Save A Life GmbH erklärt in alleiniger Verantwortung, dass das  
MARK Save A Life GmbH declares in full responsibility, that the

Produkt: **MARK Elephant Hub**  
(Schutz gegen Absturz, Absenke- und Rettungsgerät (Kat. III)/PSA Verordnung (EU) 2016/425))  
product: **MARK Elephant Hub**  
(Protection against falls from a height - Descender and rescue device  
(Cat. III)/PPE-Regulation (EU) 2016/425))

Nr.: **laufende Seriennummer am Gerät**  
no.: **serial number on the device**

Zertifizierung: **2013**  
certification: **2013**

auf das sich diese Erklärung bezieht, mit der / den folgenden Norm(en) oder normativen Dokument(en)  
übereinstimmt:

corresponds to following standards:

EN 341 : 2011  
EN 365 : 2004  
EN 1496 : 2017

Baumstergprüft gemäß den Bestimmungen der PSA-Verordnung (EU) 2016/425  
type-tested according to regulations of the PSA-directive (EU) 2016/425

Kennnummer: **0511 STP AUVA**  
MARK Save A Life GmbH unterliegt dem Verfahren nach Modul D der PSA-Verordnung  
(EU) 2016/425 zur jährlichen Qualitätsprüfung.  
Diese wurde durch 0511 STP AUVA durchgeführt.

Identification number: **0511 STP AUVA**  
MARK Save A Life is subject to the procedure for annual quality inspection referred to  
modul D of the PPE-directive (EU) 2016/425, which was performed by AUVA 0511 STP.

Spital am Pyhrn, 06-2019

Ing. Rudolf Mark  
Geschäftsführer/General Manager



MARK Save A Life GmbH  
Gleinkersau 23  
4502 Spital am Pyhrn  
Austria / Europe

Tel. +43 7563 8002-0  
Fax +43 7563 8043-117  
Mail mark@savealife.at  
Web www.savealife.at

FN/Company no. FN 347588  
UID/Value added tax ATU 65739529  
HG/Competent court Landesgerichte Steier  
Gf/General Manager Ing. Rudolf Mark







**Making  
your life  
safer.**